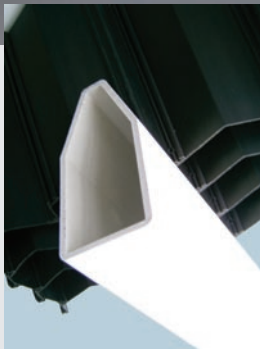


# Tube Settlers

TUBEdek®

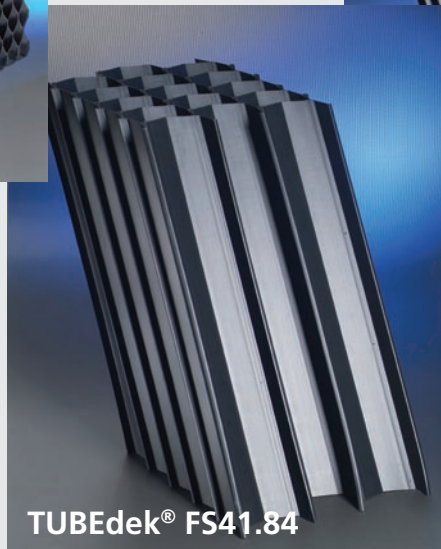
TUBEdek® KLP 638



TUBEdek® FS41.50



TUBEdek® FS41.84

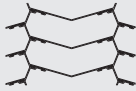

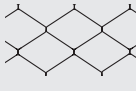


- ✓ **Process Efficiency**  
From multiplication of the sedimentation area, chevron channel shape and adaptation of the settling area spacing and slope.
- ✓ **Flexible dimensions**  
TUBEdek® can be adapted to all kinds of shapes, inclinations, round settlers and allows cut outs.
- ✓ **Easy handling**  
Simple on site assembly method grants low cost, safe delivery to any place in the world.
- ✓ **Sophisticated support system**  
With stainless steel and specially shaped glass fibre reinforced plastic beams minimizing turbulence and sludge deposit.
- ✓ **Strong and high quality material**  
TUBEdek® provides high stability of the modules for easy maintenance – PP material approved for high standards of potable water applications.

# Tube Settlers

## TUBEdek®

### Technical Data

Type		TUBEdek® FS41.50	TUBEdek® FS41.84	TUBEdek® KLP 638
				
Sedimentation area	Slope 60° [m²/m³]	11	6,25	15
	Slope 55° [m²/m³]	13	7	-
Vertical module height [mm]		500 - 2000	≈ 700 - 2000	
Standard module height [mm]		1000	1000 / 1500	610
Lamella pitch [mm]		44	82	33 (average)
Hydraulic radius [cm]		1,5	2,6	1,7
Material		PVC / PPTV	PVC / PPTV	PPTV
Max. operation temperature	[°C/PVC]	55	55	-
	[°C/PP TV]	80	80	80
Weight (dry)	[kg/m³]	80 (PVC)	62 (PVC)	20 - 50 (different sheet thickness)
	[kg/m³]	55 (PPTV)	35 (PPTV)	

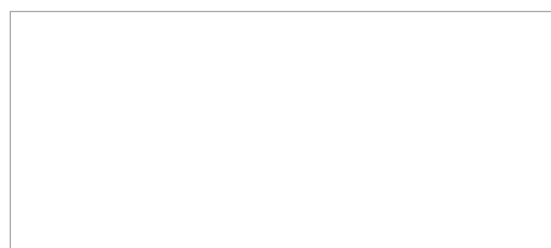
### Typical Applications

<b>Potable and process water</b>	<ul style="list-style-type: none"> <li>• Surface water</li> <li>• Ground water</li> <li>• Filter backwash water</li> </ul>	<ul style="list-style-type: none"> <li>• Filter backwash water</li> </ul>	<ul style="list-style-type: none"> <li>• Low solids load polishing</li> </ul>
<b>Waste water</b>	<ul style="list-style-type: none"> <li>• Aqua culture</li> <li>• Humus tanks behind fixed film processes</li> <li>• Flocculated water</li> </ul>	<ul style="list-style-type: none"> <li>• Primary sedimentation</li> <li>• Stormwater</li> <li>• Activated sludge with low sludge volumes</li> </ul>	<ul style="list-style-type: none"> <li>• Aqua culture</li> <li>• Polishing</li> </ul>

### General Remarks

PVC-material:	UV stabilized, highest surface finish
PP-material:	UV stabilized, certified for potable water application
Sedimentation area:	Defined as horizontal projection of the TUBEdek surface per m³. To be multiplied by H to get the sedimentation area per m² of footprint area.
Height:	For circular tanks maximum available Height H = 1000 mm
Anti flotation restraints:	Tube settlers made of talcum reinforced Polypropylene (PPTV) have a lower density than water and must have restraints against flotation, available from 2H Kunststoff GmbH.
Load to supports:	When designing the supports the operational load has to be added to the product weight. (Recommendation: min. 50kg/m³, for wastewater up to 200 kg/m³)
Support:	For the equipment of large tanks, 2H Kunststoff GmbH can supply special GRP supports for optimized module dimensions and support layouts.
Shape KLP:	Standard module end is cut vertically.
Max. tolerances:	On all dimensions +/- 20 mm or 2%, whichever is the greater. Tighter tolerances by prior agreement.

Contact / accredited dealer



**2H Kunststoff GmbH**  
Dieselweg 5  
D-48493 Wettringen

Telephone +49 (0) 25 57 / 93 90-0  
Telefax +49 (0) 25 57 / 93 90-49  
Internet: www.2h-kunststoff.de  
E-Mail: info@2h-kunststoff.de